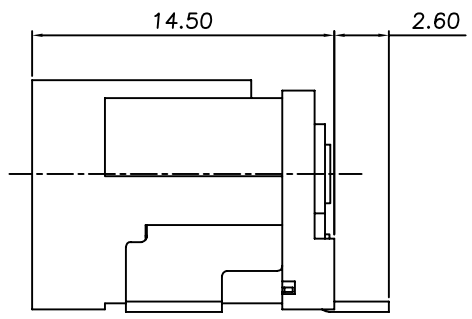
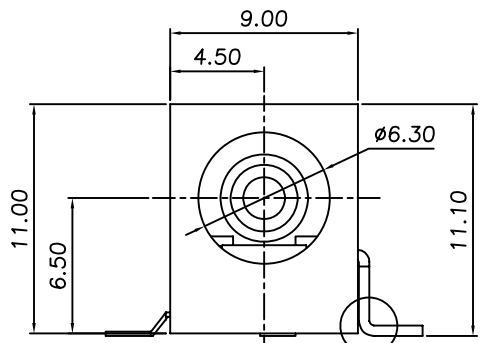
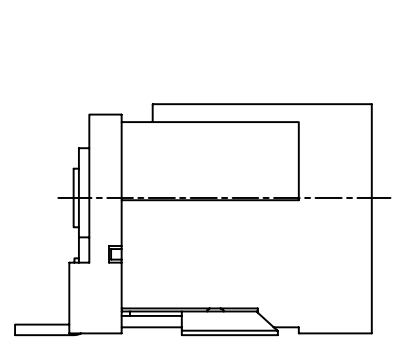


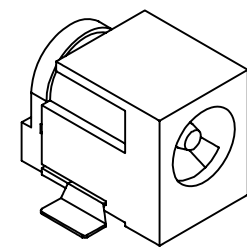
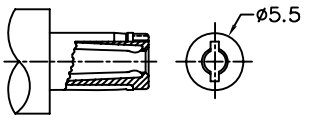
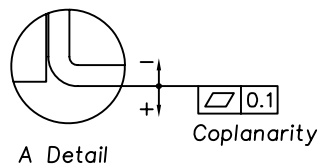
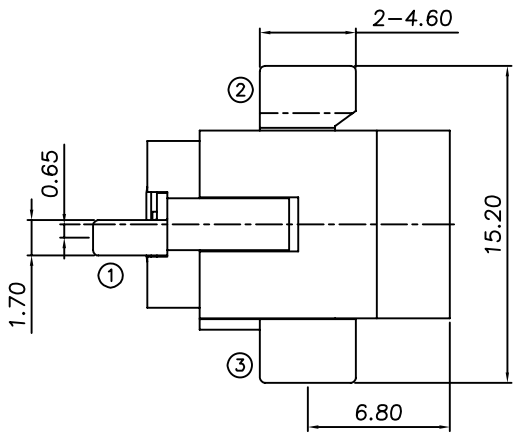
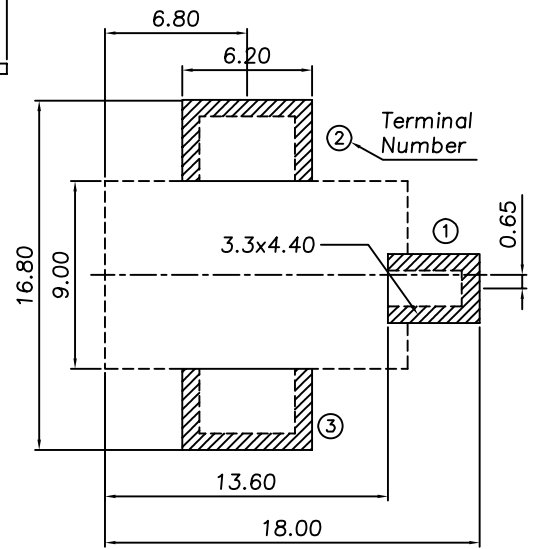
RoHS
Compatible

發行
2012.09.12
達立

△				
△				
△				
△				
ZONE	REV	DESCRIPTION	DATE	APPD.



P.C.B Mounting
pattern Dimension



Model No.	DC-061DH-H3
Schematic	
Center Pin	$\phi 2\text{mm}$
	$\phi 2.5\text{mm}$

- Specifications**
1. Rating : 16V 5A Max.
 2. Contact resistance : 30m Ω Max.
 3. Insulation resistance : 100M Ω Min.
 4. Withstand voltage : 500VAC
 5. Insertion and extraction force : 0.3-3Kgf
 6. Life test : 5,000 cycles Min.
 7. Operating temperature : -25 $^{\circ}$ C~85 $^{\circ}$ C

5	Terminal 3	Brass	1	Ag Plated
4	Terminal 2	Copper Alloy	1	Ag Plated
3	Terminal 1	Brass	1	Ag Plated
2	Centre Pin	Copper	1	Ni Plated
1	Plastic	PA6T	1	Black
NO	Part Name	Material	Q"ty	Finishing

達立科技股份有限公司
Dawning Precision Co., Ltd.
TEL: 886-2-82271388 FAX: 886-2-82272198

DESIGN	Will	SCALE		
DRAWING	Will	UNIT	mm	
CHECK	Will	SIZE	A4: 210*297	
APPROVAL	Eric	VERSION	01	

TOLERANCE UNLESS OTHERWISE STATED(mm)	PART NAME	DC POWER SOCKET
less than 10 — ± 0.3	PART NO	DC-061DH-H3
10~30 — ± 0.4	DRAWING NO	
30~100 — ± 0.5	DATE	2012/09/12
ANGIE — $\pm 2^{\circ}$		