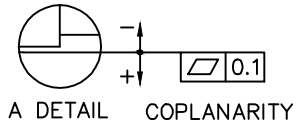
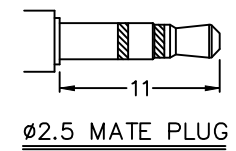
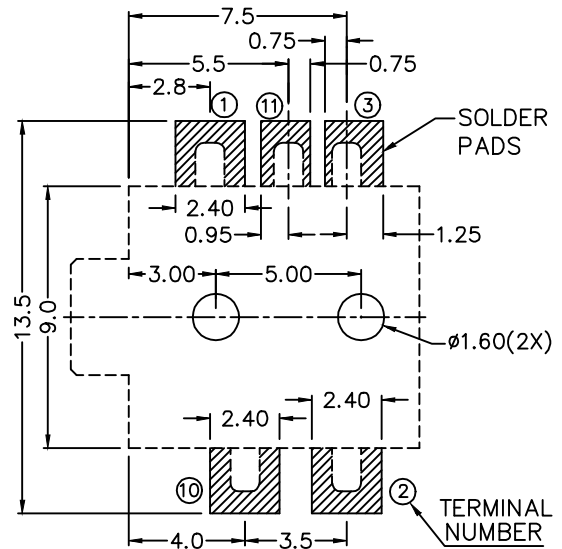
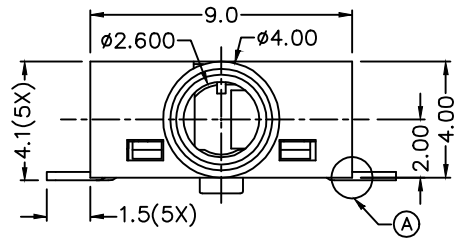
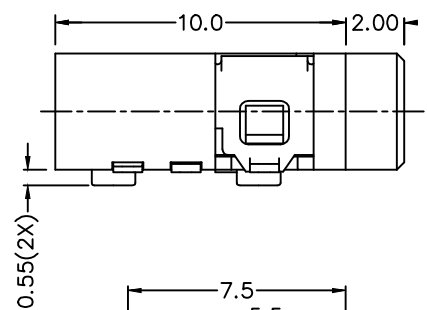


△				
△				
△				
△				
ZONE	REV	DESCRIPTION	DATE	APPD.

達立
2015.03.09
發行

RoHS
Compatible



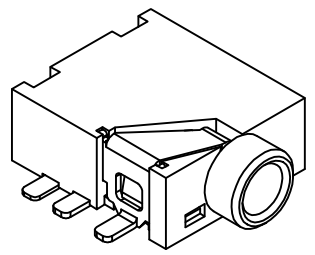
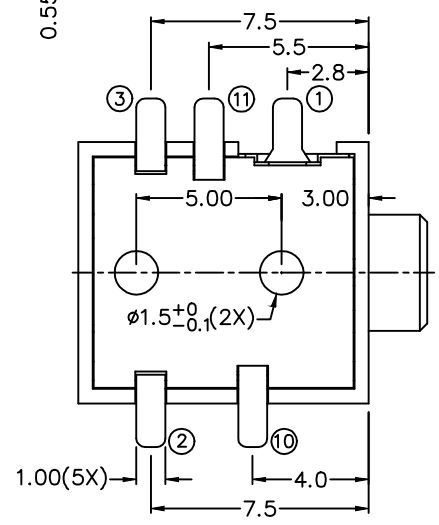
RECOMMENDED SOLDER PAD LAYOUT

SPECIFICATION

- Rating : DC 12V 1A.
- Contact resistance : $\leq 30m \Omega$; After test : $\leq 50m \Omega$
- Insulation resistance : $\geq 100M \Omega$ (DC250V)
After test : $\geq 50M \Omega$
- Insertion and extraction force : 0.3 – 3kgs Max.
- Life test : 5,000 cycles.

1
2
3

1
2
3



5	Terminal	11	Brass	1	Au plating
5	Terminal	10	Brass	1	Au plating
5	Terminal	3	Copper alloy	1	Au plating
4	Terminal	2	Copper alloy	1	Au plating
3	Terminal	1	Copper alloy	1	Au plating
2	Cover		PA9T	1	Black
1	Housing		PA9T	1	Black
NO	Part Name		Material	Q'ty	Finishing

MODEL NO.	PJ - 2595	PJ - 2594A	PJ - 2594B	PJ - 2593	PJ - 2593A	PJ - 2592
SCHEMATIC						

達立科技股份有限公司
Dawning Precision Co., Ltd.
TEL: 886-2-82271388 FAX: 886-2-82272198

DESIGN	Ross	SCALE	
DRAWING	Ross	UNIT	mm
CHECK	Elsa	SIZE	A4: 210*297
APPROVAL	Eric	VERSION	01

TOLERANCE UNLESS OTHERWISE STATED(mm)	PART NAME	Phone JACK
less than 10 — ±0.3	PART NO	PJ-259 SERIES
10~30 — ±0.4	DRAWING NO	
30~100 — ±0.5	DATE	2015/03/05
ANGIE — ±2°		

F E D C B A

www.dawning2.com.tw