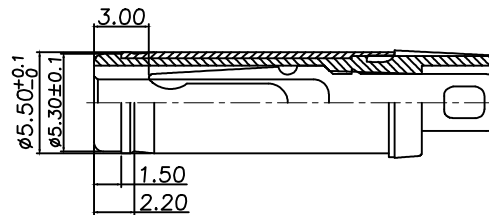
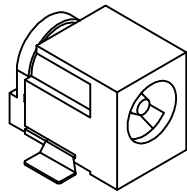


△				
△				
△				
△				
ZONE	REV	DESCRIPTION	DATE	APPD.



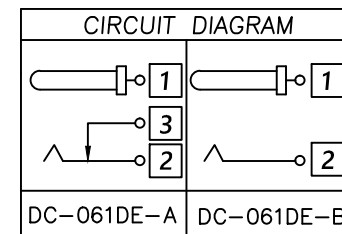
DC MATE PLUG

Model No.	DC-061DE-x-2.0	DC-061DE-x-2.5
PIN	∅2.00	∅2.50

Ordering information :

DC-061DE-x-x-S057

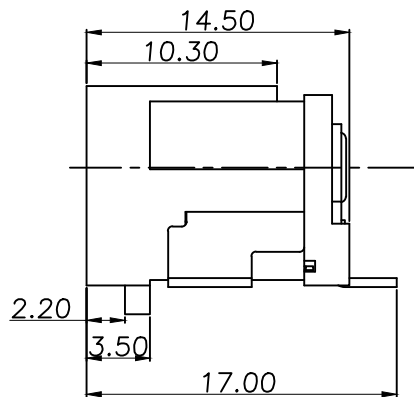
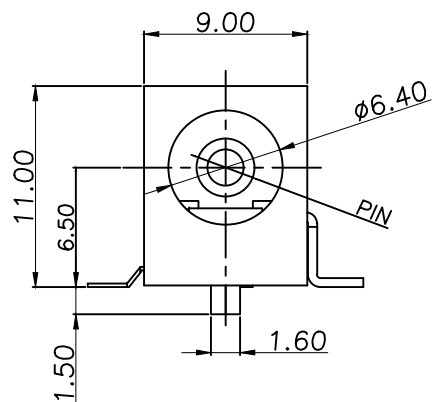
Center pin diameter
Circuit Diagram



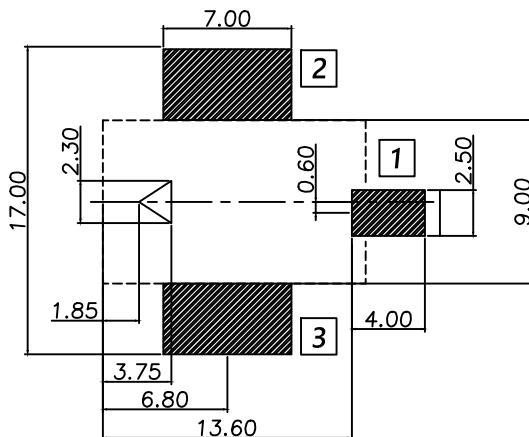
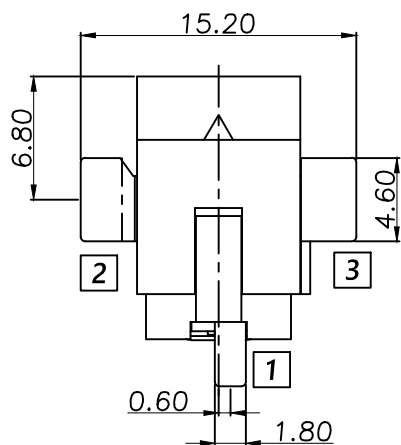
SPECIFICATION

- Rating : DC 20V 5A;
- Contact resistance : ≤ 30m Ω ;
After test : ≤ 50m Ω
- Insulation resistance : ≥ 100M Ω (DC250V)
After test : ≥ 50M Ω
- Withstanding voltage : 500VA ;
- Insertion and extraction force : 3 - 30N ;
- Life test : 5,000 cycles ;

6	Shunt terminal	3	Brass t0.5	1	Ag plating
5	Tip spring	2	Phosphor bronze t0.25	1	Ag plating
4	Center pin terminal	1	Brass t0.5	1	Ag plating
3	Center pin	1	Brass	1	Ni plating
2	Cover		PA9T	1	Black
1	Housing		PA9T	1	Black
NO	Part Name		Material	Q"ty	Finishing



RECOMMENDED P.C.B MOUNTING PATTERN DIMENSION



達立科技股份有限公司
Dawning Precision Co., Ltd.
TEL: 886-2-82271388 FAX: 886-2-82272198

DESIGN	Charles	SCALE	
DRAWING	Charles	UNIT	mm
CHECK	Charles	SIZE	A4: 210*297
APPROVAL	Baker	VERSION	02

TOLERANCE UNLESS OTHERWISE STATED(mm)	
0	±0.50
0.0	±0.40
0.00	±0.30
ANGLE	±2°

PART NAME	DC POWER SOCKET
PART NO	DC-061DE-x-x-S057
DRAWING NO	
DATE	2023/10/16

www.dawning2.com.tw