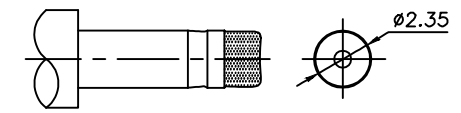
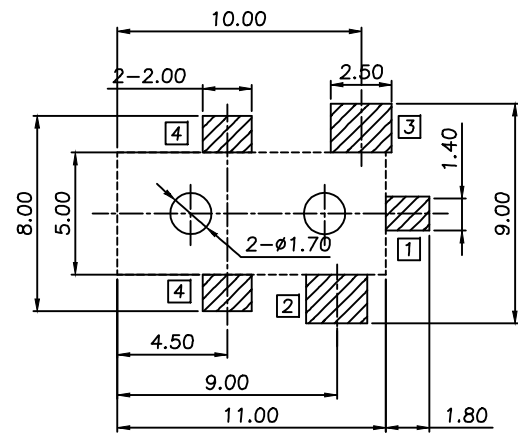
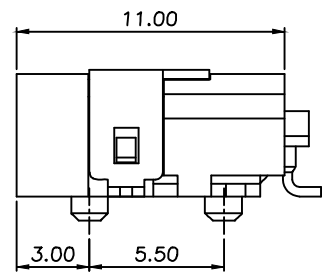
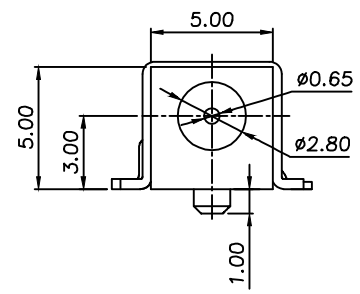


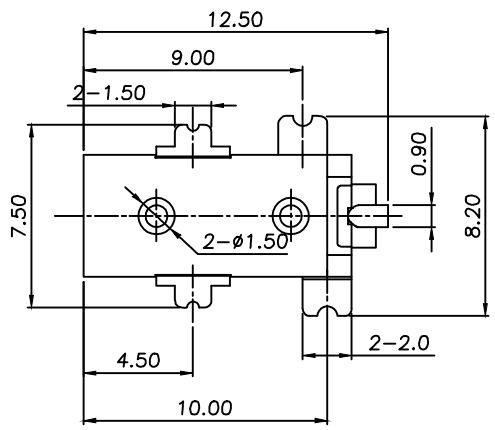
RoHS
Compatible

△				
△				
△				
△				
ZONE	REV	DESCRIPTION	DATE	APPD.



DC Mate Plug

P.C.B Layout
(Top View)



Order Information:
DC-032H-__-0.65-S057

Center Pin
Circuit Diagram

Specifications

1. Rating : 16V 2.5A Max.
2. Contact resistance: 50mΩ Max.
3. Insulation resistance : 100MΩ Min.
4. Withstand voltage : 500VAC
5. Insertion and extraction force : 3-30N
6. Life test : 5,000 cycles
7. Operating temperature : -20°C~70°C

發行
2013.02.23
達立

Model No.	DC-032H-A-S057	DC-032H-B-S057
Schematic		
Center pin	ø0.65mm	

□ Terminal No.

⑤	Shell	④	Brass t=0.4	1	Ag Plated
④	Shunt Terminal	③	Brass t=0.4	1	Ag Plated
③	Tip Spring	②	Stainless Steel t=0.25	1	Ag Plated
②	Center Pin	①	Brass	1	Ag Plated
①	Housing		PA9T	1	Black
No.	Part Name		Material	Q"ty	Finishing

達立科技股份有限公司
Dawning Precision Co., Ltd.
TEL: 886-2-82271388 FAX: 886-2-82272198

DESIGN	Will	SCALE		
DRAWING	Will	UNIT	mm	
CHECK	Will	SIZE	A4: 210*297	
APPROVAL	Eric	VERSION	01	

TOLERANCE UNLESS OTHERWISE STATED(mm)	PART NAME	DC POWER SOCKET
less than 10 — ±0.2	PART NO	DC-032H-S057 SERIES
10~30 — ±0.3	DRAWING NO	
30~100 — ±0.5	DATE	2013/02/22
ANGIE — ±2'		