

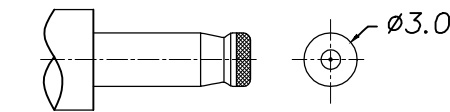
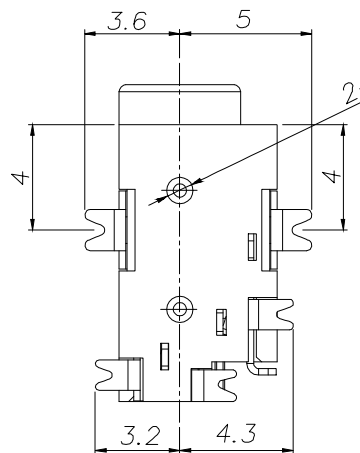
RoHS
Compatible

達立
2014.12.03
發行

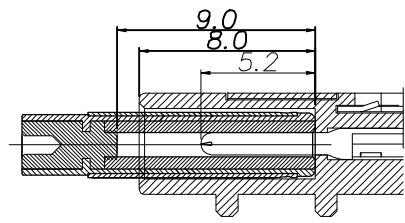
△				
△				
△				
△				
ZONE	REV	DESCRIPTION	DATE	APPD.

Order Information :
DC-067DS-x-S057
□ = Ag plated
AU = Gold plated

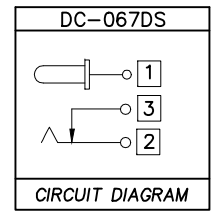
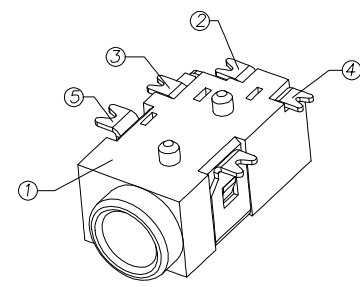
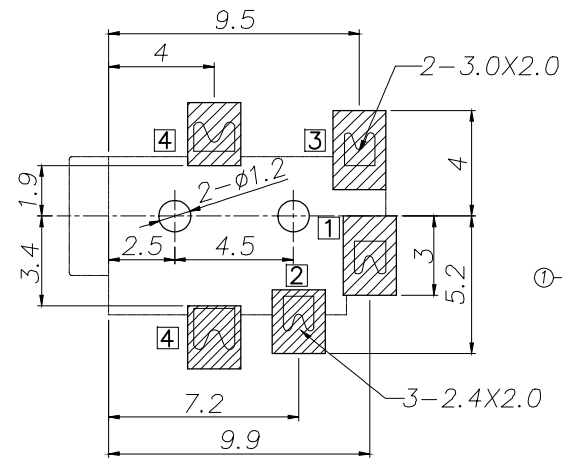
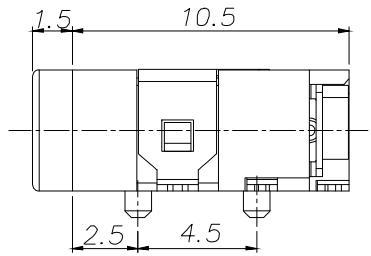
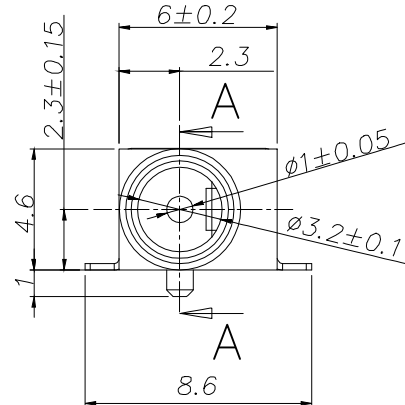
RECOMMENDED P.C.B. LAYOUT
UNSPECIFIED TOLERANCE: ±0.05
(Copper-sided view)



DC MATE PLUG



SECTION: A-A



□ : TERMINAL NO.

Specification:
1. Rating: DC 12V 2.5A;
2. Contact resistance: ≤30mΩ;
After test: ≤50mΩ
3. Insulation resistance: ≥100MΩ (500VDC);
After test: ≥50MΩ
4. Insertion and extraction force: 3N~30N;
5. Life test: 5000cycles min

5	Shield plate	1	Brass t0.25	Silver/Gold plating
4	Shunt terminal	3	Brass t0.25	Silver/Gold plating
3	Tip spring	2	Phosphor bronze t0.25	Silver/Gold plating
2	Center pin	1	Brass	Silver/Gold plating
1	Housing	1	PA9T UL94V-0	Black
NO.	PART NAME	QTY	MATERIAL	FINISHING

達立科技股份有限公司
Dawning Precision Co., Ltd.
TEL: 886-2-82271388 FAX: 886-2-82272198

DESIGN	Ross	SCALE	
DRAWING	Ross	UNIT	mm
CHECK	Elsa	SIZE	A4: 210*297
APPROVAL	Eric	VERSION	01

TOLERANCE UNLESS OTHERWISE STATED(mm)	PART NAME	DC POWER SOCKET
less than 10 — ±0.2	PART NO	DC-067DS-x-S057
10~30 — ±0.3	DRAWING NO	
30~100 — ±0.5	DATE	2014/12/03
ANGLE — ±2°		

www.dawning2.com.tw