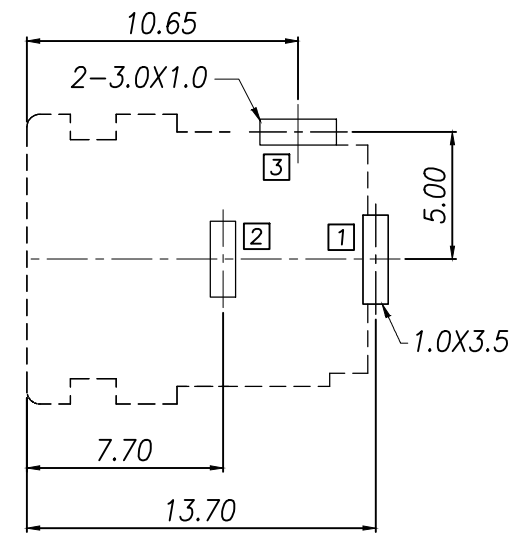
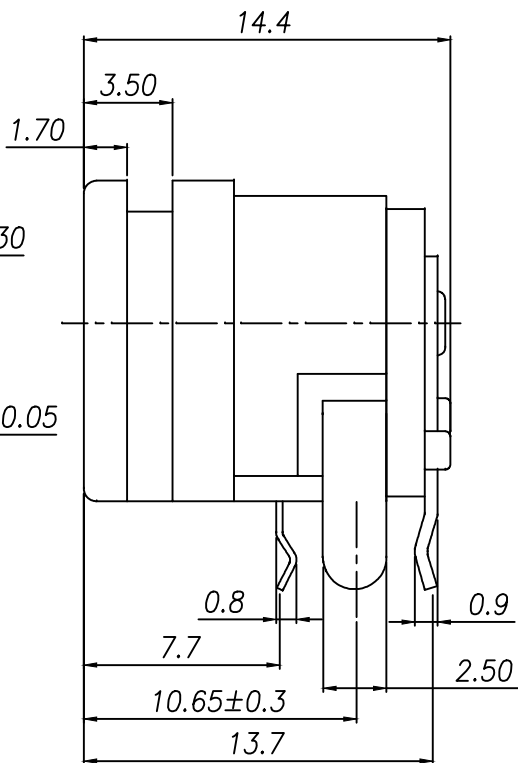
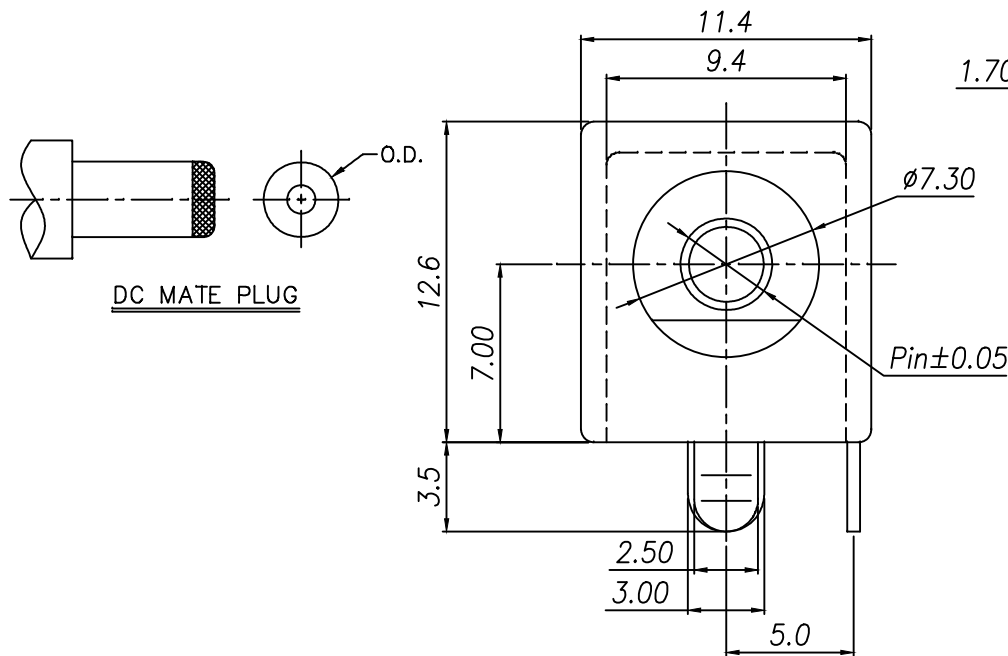


△				
△				
△				
△				
ZONE	REV	DESCRIPTION	DATE	APPD.

研發  
2016.02.15  
達立

**RoHS**  
Compatible



RECOMMENDED PCB LAYOUT  
TOLERANCE: ±0.05  
(BOTTOM VIEW)

MODEL NO.	DC-040H-2-A
SCHMATIC	

**Specifications**

- Rating : DC 25V 5.0A
- Contact resistance: 50mΩ Max.  
After test: 100mΩ Max.
- Insulation resistance : 100MΩ Min.(500VDC)  
After test: 50mΩ Min.
- Withstand voltage : 500VAC
- Insertion and extraction force : 3-30N
- Life test : 5,000 cycles

MODEL NO.	DC-040H-2-x-2.0
PIN	∅2.0mm
DC PLUG O.D.	∅5.5mm

⑥	Shunt Terminal	Brass t=0.5	1	Sn Plated
⑤	Tip Spring	Phosphor Bronze t=0.25	1	Sn Plated
④	Center Pin Terminal	Brass t=0.5	1	Sn Plated
③	Center Pin	Copper alloy	1	Ni Plated
②	Cover	PBT	1	Black
①	Housing	PBT	1	Black
No.	Part Name	Material	Q'ty	Finishing

達立科技股份有限公司

**Dawning Precision Co., Ltd.**  
TEL: 886-2-82271388 FAX: 886-2-82272198

DESIGN	Sean	SCALE	
DRAWING	Sean	UNIT	mm
CHECK	Sean	SIZE	A4: 210*297
APPROVAL	Eric	VERSION	02

TOLERANCE UNLESS OTHERWISE STATED(mm)	
0	±0.5
0.0	±0.3
0.00	±0.2
ANGLE	±2°

PART NAME	DC POWER SOCKET
PART NO	DC-040H-2-A-2.0-S057
DRAWING NO	
DATE	2016/02/15

www.dawning2.com.tw