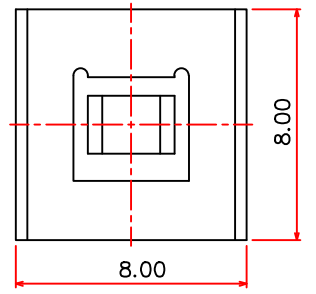


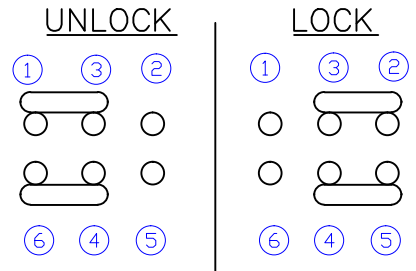
4				
3				
2				
1				
ZONE	REV	DESCRIPTION	DATE	APPD.

Order Information:  
 PS-D15-L-NY-S111  
 Plastic Material: Nylon  
 LOCK

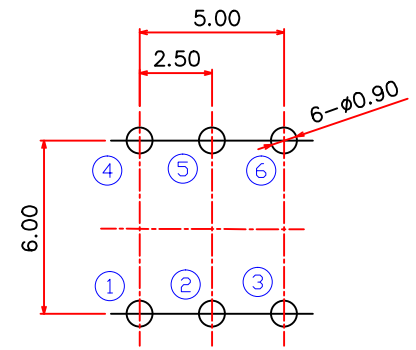
RoHS  
 Compatible



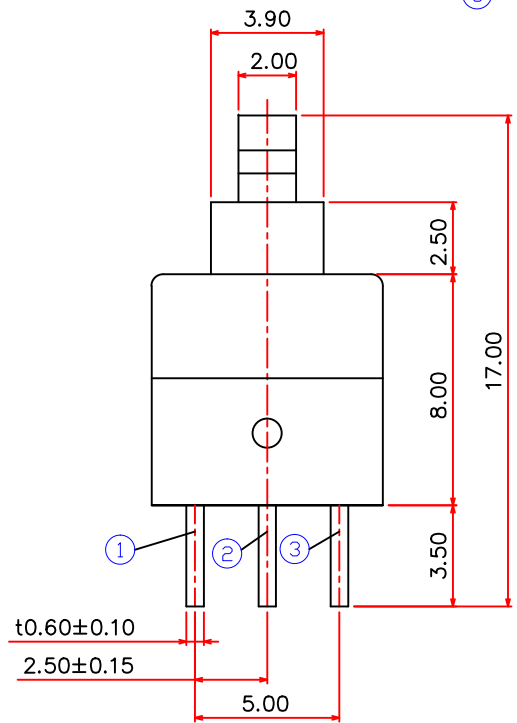
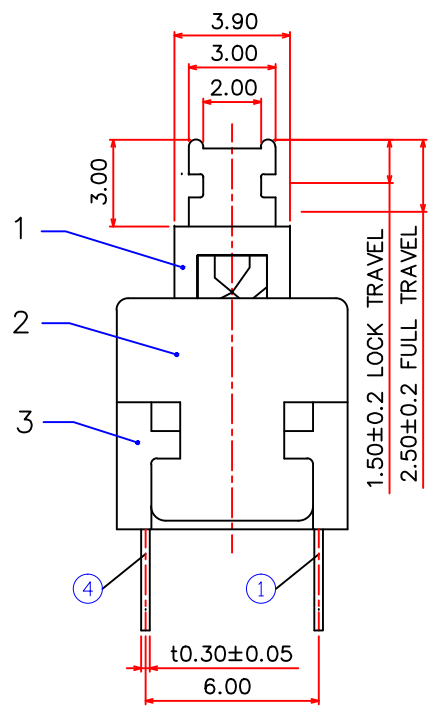
Circuit Diagram



P.C.B Mounting pattern Dimension



R&D發行  
 2019.07.18  
 達立



Specifications

- Rating : DC 30V, 0.1A
- Circuit : 2P-2T
- Contact resistance : 70mΩ max(Initial)
- Insulation resistance : 100MΩ Min
- Timing : non-shorting
- Stroke : full-2.5mm  
lock-1.5mm
- Operating force : 200±100gf
- Life : 10,000 cycles

7	Contact	Phosphor Bronze	1	Ag Clad
6	Spring	Stainless Steel	1	—
5	CAM Stick	SUS Wire	1	—
4	Terminal	Brass Strip	6	Ag Plated
3	Case	PA66	1	White
2	Cover	PA66	1	Black
1	Knob	PA66	1	Blue
No.	Part Name	Material	Q'ty	Finishing

達立科技股份有限公司  
 Dawning Precision Co., Ltd.  
 TEL: 886-2-82271388 FAX: 886-2-82272198

DESIGN	Jeff	SCALE	
DRAWING	Jeff	UNIT	mm
CHECK	Jeff	SIZE	A4: 210*297
APPROVAL	Honda	VERSION	03

TOLERANCE UNLESS OTHERWISE STATED(mm)	
0	±0.50
0.0	±0.30
0.00	±0.20
ANGLE	±2°

PART NAME	PUSH SWITCH
PART NO	PS-D15-L-NY-S111
DRAWING NO	
DATE	2019/07/18