

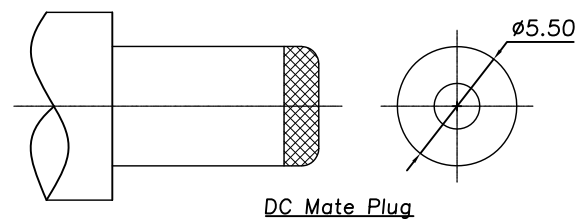
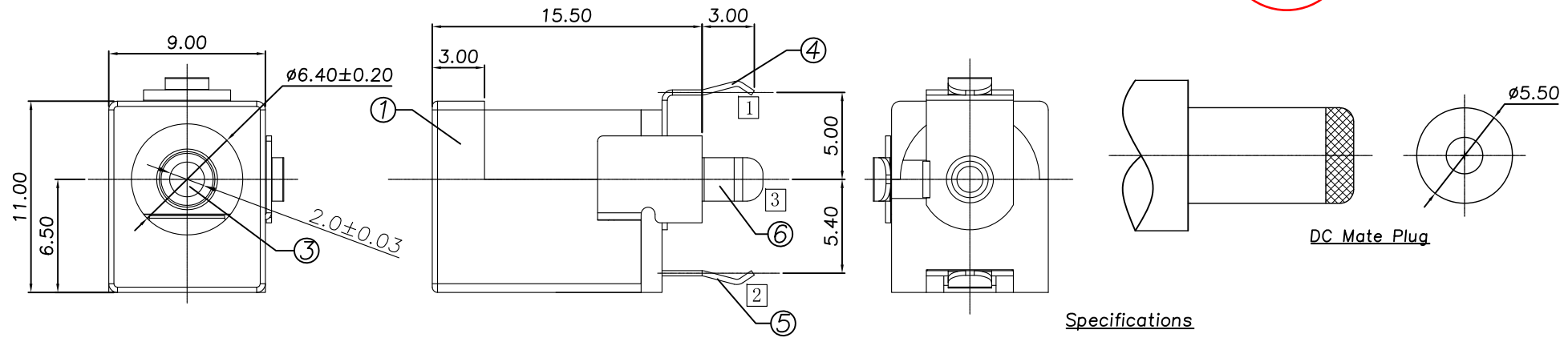
RoHS
Compatible

R&D發行
2019.03.05
達立

ORDER INFORMATION:
DC-006-A-2.0-S057 series

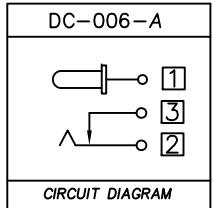
Center Pin
Circuit Diagram

△				
△				
△				
△				
ZONE	REV	DESCRIPTION	DATE	APPD.

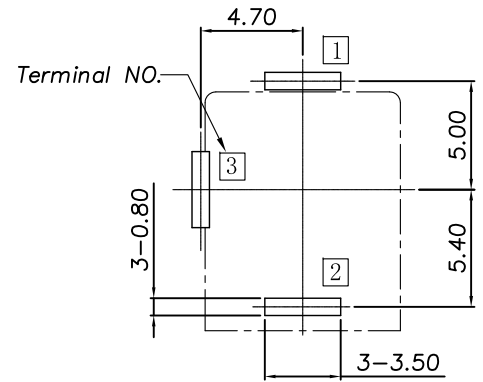


Specifications

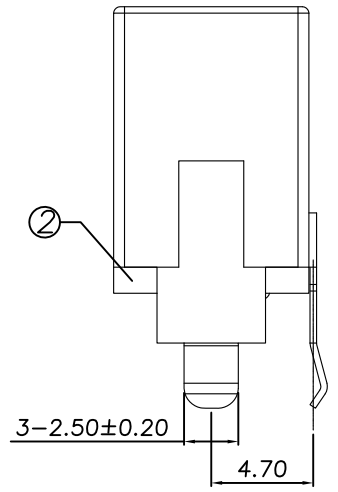
1. Rating : DC 20V 2.5A.
2. Contact resistance: 30mΩ Max.
After test: 50mΩ Max.
3. Insulation resistance : 100MΩ Min.(500VDC)
After test: 50mΩ Min.
4. Withstand voltage : 500VAC.
5. Insertion and extraction force : 3-30N.
6. Life test : 5,000 cycles Min.
7. Operating temperature : -20°C~70°C



Terminal No.



RECOMMENDED P.C.B. LAYOUT
UNSPECIFIED TOLERANCE: ±0.05
(BOTTOM VIEW)



⑥	Shunt Terminal	③	Brass ,t=0.30mm	1	Sn Plated
⑤	Tip Spring	②	Phosphor Bronze,t=0.30mm	1	Sn Plated
④	Center Pin Terminal	①	Brass ,t=0.30mm	1	Sn Plated
③	Center Pin	①	Copper alloy	1	Ni Plated
②	Cover		PF	1	
①	Housing		PBT	1	Black
No.	Part Name		Material	Q"ty	Finishing

達立科技股份有限公司
Dawning Precision Co.,Ltd.
TEL: 886-2-82271388 FAX: 886-2-82272198

DESIGN	Jeff	SCALE	
DRAWING	Jeff	UNIT	mm
CHECK	Jeff	SIZE	A4: 210*297
APPROVAL	Honda	VERSION	01

TOLERANCE UNLESS OTHERWISE STATED(mm)	PART NAME	DC POWER SOCKET
less than 10 — ±0.3	PART NO	DC-006-A-2.0-S057
10~30 — ±0.3	DRAWING NO	
30~100 — ±0.5	DATE	2019/03/05
ANGIE — ±2°		