

RoHS
Compatible

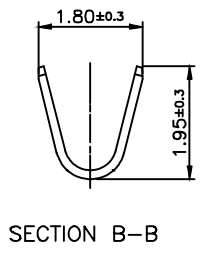
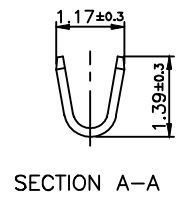
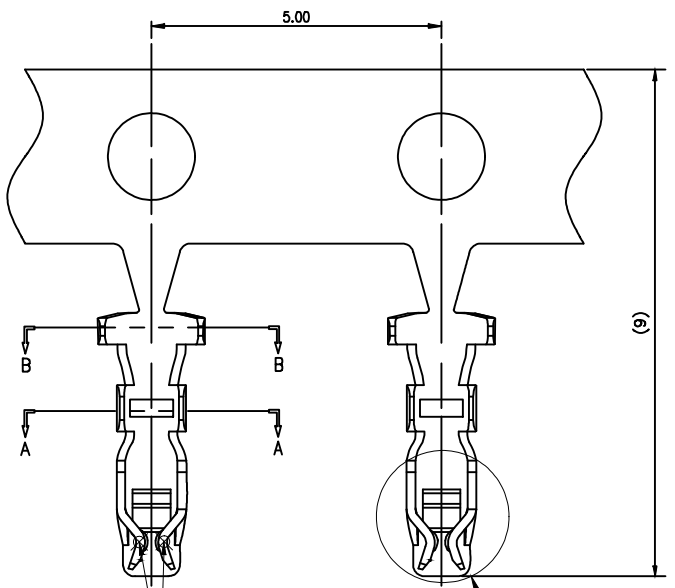
△				
△				
△				
△				
ZONE	REV	DESCRIPTION	DATE	APPD.

NOTES:

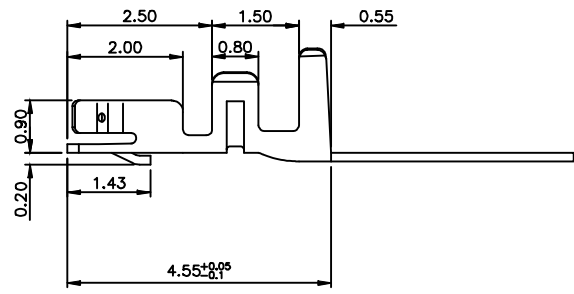
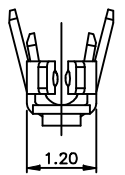
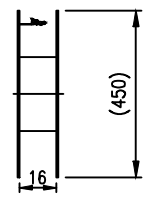
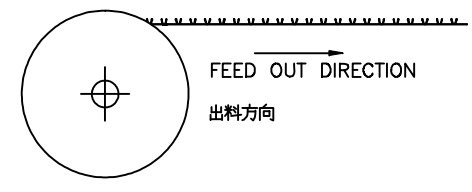
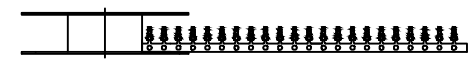
1. MATERIAL: COPPER ALLOY, THICKNESS 0.15±0.01.
2. PLATING: 50~100U" NICKEL UNDERPLATING OVERALL.
3. COMPONENT LOAD PER REEL: 15K PCS.
4. WIRE TYPE: UL10109 AWG#24
5. PART NUMBER

WB2002-T X

- G: GOLD FLASH
- T: PLATING GOLD 3u" on contact area
- S: PLATING BRIGHT TIN 100u",MIN
- M: GOLD FLASH 1u",MIN.



plating test point contact area



達立科技股份有限公司
Dawning Precision Co., Ltd.
TEL: 886-2-82271388 FAX: 886-2-82272198

DESIGN	Honda	SCALE		
DRAWING	Honda	UNIT	mm	
CHECK	Honda	SIZE	A4: 210*297	
APPROVAL	Honda	VERSION	01	

TOLERANCE UNLESS OTHERWISE STATED(mm)	
0	±0.35
0.0	±0.25
0.00	±0.15
ANGLE	±3°

PART NAME	WTB TERMINAL 2.00mm Pitch
PART NO	WB2002-TX SERIES
DRAWING NO	
DATE	2020.04.16