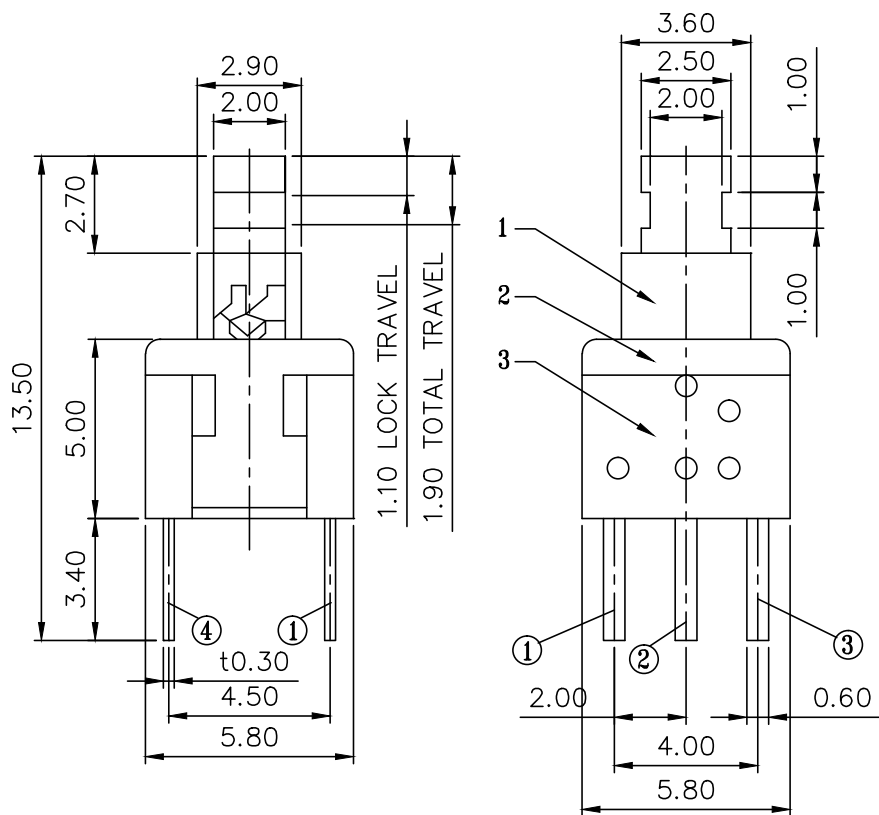


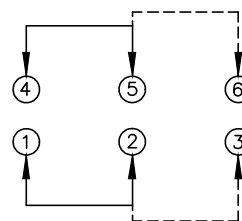
| | | | | |
|------|-----|-------------|------|-------|
| △ | | | | |
| △ | | | | |
| △ | | | | |
| △ | | | | |
| ZONE | REV | DESCRIPTION | DATE | APPD. |

R&D發行
2023.12.18
達立

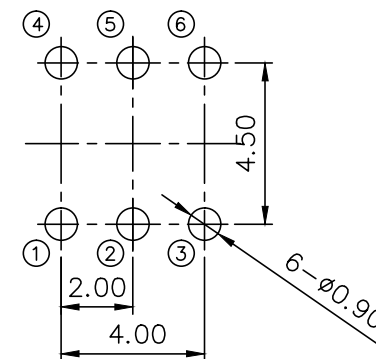
RoHS
Compatible



CIRCUIT DIAGRAM
(NON-SHORTING)



RECOMMENED P.C.B MOUNTING
PATTERN DIMENSION



Specifications

- Rating : DC 12V, 0.2A.
- Function : 2P2T
- Travel : Total 1.9mm
Lock 1.1mm
- Contact resistance : 70mΩ Max.
- Insulation resistance : 100MΩ Min.
- Operating force : 350±100gf
- Operating life: 10,000 cycles Min.

| 6 | Terminal | Brass strip | 1 | Ag Plated |
|----|-----------|-------------|------|-----------------|
| 5 | Cam Stick | SUS | 1 | Natural |
| 4 | Spring | SUS | 1 | Natural |
| 3 | Case | PA66 | 1 | Gray |
| 2 | Cover | PA66 | 1 | Black |
| 1 | Knob | PA66/PBS | 1 | White/Ag Plated |
| NO | Part Name | Material | Q'ty | Remark |

達立科技股份有限公司
Dawning Precision Co.,Ltd.
TEL: 886-2-82271388 FAX: 886-2-82272198

| | | | |
|----------|---------|---------|-------------|
| DESIGN | Charles | SCALE | |
| DRAWING | Charles | UNIT | mm |
| CHECK | Charles | SIZE | A4: 210*297 |
| APPROVAL | Baker | VERSION | 01 |

| TOLERANCE UNLESS OTHERWISE STATED(mm) | |
|---------------------------------------|-------|
| 0 | ±0.50 |
| 0.0 | ±0.30 |
| 0.00 | ±0.20 |
| ANGLE | ±2° |

| | |
|------------|---------------------|
| PART NAME | PUSH SWITCH |
| PART NO | PS-D16L-350-NY-S111 |
| DRAWING NO | |
| DATE | 2023/12/18 |

www.dawning2.com.tw