

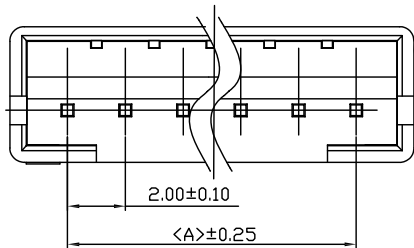
△				
△				
△				
△				
ZONE	REV	DESCRIPTION	DATE	APPD.

RoHS
Compatible

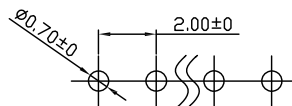
R&D發行
2020.04.16
達立

Specifications:

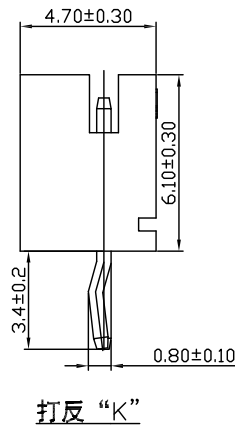
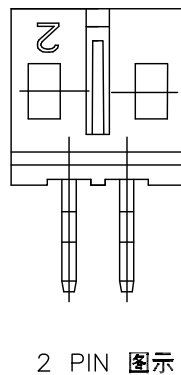
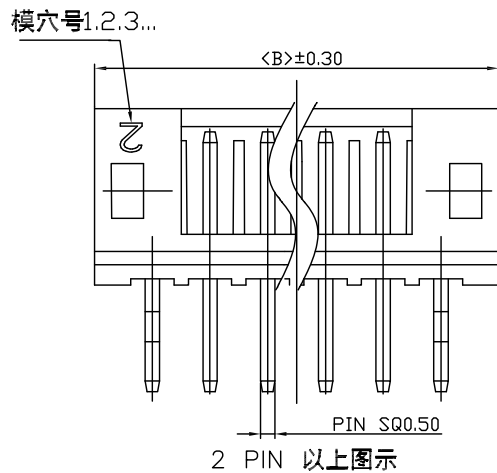
Current rating: 2A AC/DC.
Voltage rating: 100V AC/DC
Temperature range: -40°C~+105°C.
Contact resistance: 10MΩ Max.
Insulation resistance: 1000MΩ Min.
Withstanding voltage: 800V AC/minute.
Material: PA66,UL94V-0.



Recommended P.C.B Layout(Top Side)
P.C.B Thickness = 1.20mm
(Tolerance=±0.05)



WB2011H -XX X X X
Pin NO. ————
Packing ————
0: Bag Packing
1: Tube Packing
COLOR:
B: Black
N: Natural
PLATING
S: Tin PLATED
G: Gold Flash overall



PART NO.	Dimensions	
	A	B
02P	2.00	6.00
03P	4.00	8.00
04P	6.00	10.00
05P	8.00	12.00
06P	10.00	14.00
07P	12.00	16.00
08P	14.00	18.00
09P	16.00	20.00
10P	18.00	22.00
11P	20.00	24.00
12P	22.00	26.00
13P	24.00	28.00
14P	26.00	30.00
15P	28.00	32.00
16P	30.00	34.00

達立科技股份有限公司
Dawning Precision Co., Ltd.
TEL: 886-2-82271388 FAX: 886-2-82272198

DESIGN	Honda	SCALE			TOLERANCE UNLESS OTHERWISE STATED(mm)	PART NAME	WTB WAFER 2.00mm Pitch
DRAWING	Honda	UNIT	mm		0 ———— ±0.35	PART NO	WB2011H SERIES
CHECK	Honda	SIZE	A4: 210*297		0.0 ———— ±0.25	DRAWING NO	
APPROVAL	Honda	VERSION	01		0.00 ———— ±0.15	DATE	2020.04.16
					ANGLE ———— ±3°		