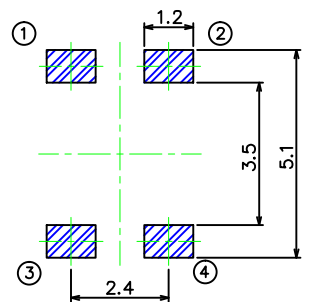


△6	E	ECN161001	2016.10.17	eason
△5	D	ECN160202	2016.02.04	honda
△4	C	ECN160105	2016.01.29	honda
△3	B	ECN151201	2015.12.11	honda
ZONE	REV	DESCRIPTION	DATE	APPD.

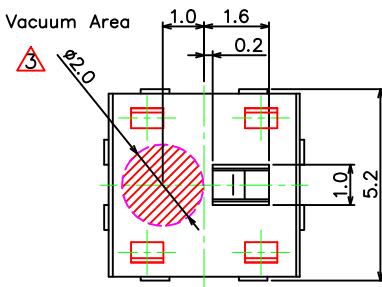
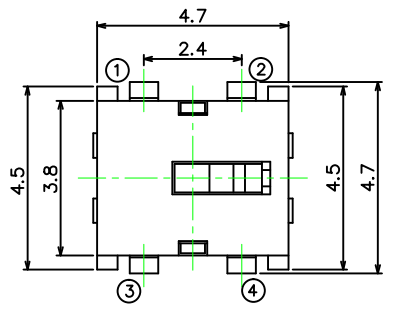
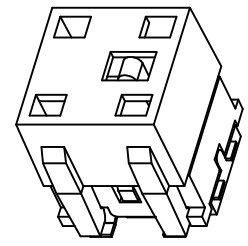
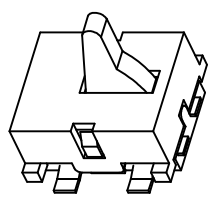
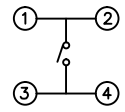
R&D發行
2019.01.17
達立

RoHS
Compatible

P.C.B Mounting Pattern Dimension



Circuit Diagram



△ SPECIFICATION

* ELECTRICAL

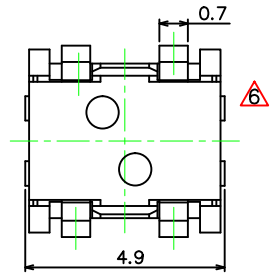
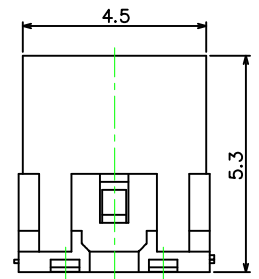
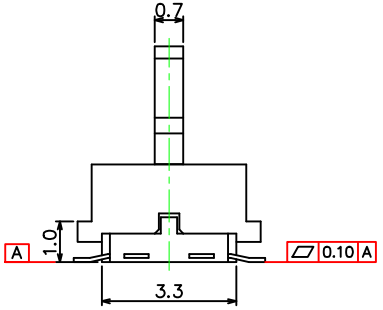
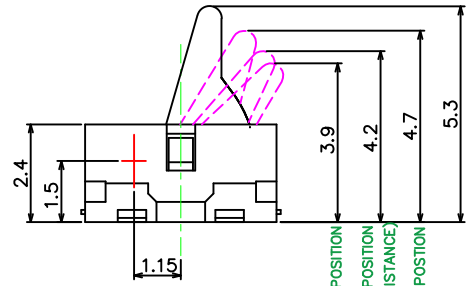
1. Rating : DC 5V, 1mA
2. Contact resistance : 1Ω Max.
3. Insulation resistance : DC250V-50MΩ Min.
4. Withstanding voltage : AC250V-1 minute
5. Operating force : 60gf Max.
6. Operating life : 100,000 cycles

* MATERIAL

- 1 CASE : LCP , COLOR BLACK
- 2 KNOB : LCP , COLOR BLACK
- 3 COVER : PA46 , COLOR BLACK
- △ 4 CAP : PA66 GF30% (FR52G30BL) , COLOR WHITE
- 5 TERMINAL : C5210-EH
- 6 SPRING : SUS 301-H

△ * PLATING

- 1 TERMINAL :
Nickel under-plated 0.20 um min overall,
Ag plated 0.70 um min. on contact and solder tail.
- 2 SPRING :
Nickel under-plated 0.15um min overall,
Ag plated 0.50 um min. on contact area.



TOTAL TRAVEL POSITION
MEASURE POSITION
(OPERATING FORCE& CONTACT RESISTANCE)
4.7Min. 5.2Max "ON" POSITION

達立科技股份有限公司
Dawning Precision Co., Ltd.
TEL: 886-2-82271388 FAX: 886-2-82272198

DESIGN	Honda	SCALE			TOLERANCE UNLESS OTHERWISE STATED(mm)	PART NAME	DETECTOR SWITCH
DRAWING	Honda	UNIT	mm		0 ±0.50	PART NO	DS-B80
CHECK	Honda	SIZE	A4: 210*297		0.0 ±0.20	DRAWING NO	△ C-DS-B80-101
APPROVAL	Eric	VERSION	E		0.00 ±0.10	DATE	2016/10/17
					ANGLE ±2°		

						PART NAME	DETECTOR SWITCH
						PART NO	DS-B80
						DRAWING NO	△ C-DS-B80-101
						DATE	2016/10/17

www.dawning2.com.tw