

ORDER INFORMATION :
TS-B58UH35-350-BL-S085

STEM COLOR =BLUE

FROCE

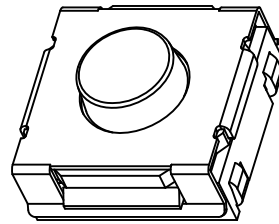
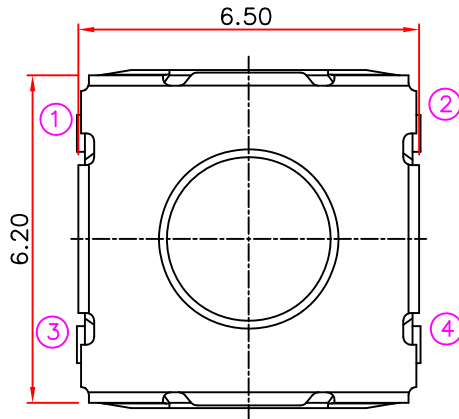
H: 3.5mm

U TYPE

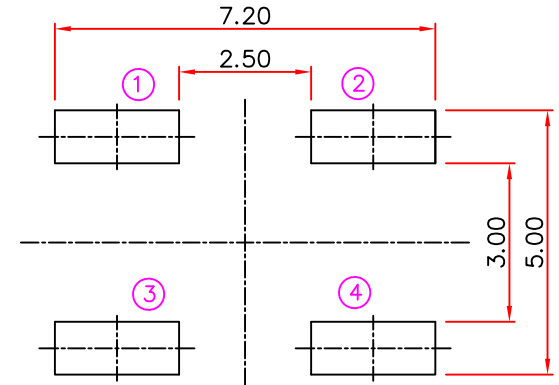
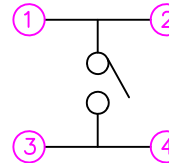
R&D發行
2019.06.21
達立

RoHS
Compatible

△				
△				
△				
△				
ZONE	REV	DESCRIPTION	DATE	APPD.



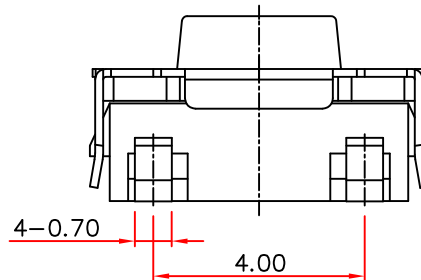
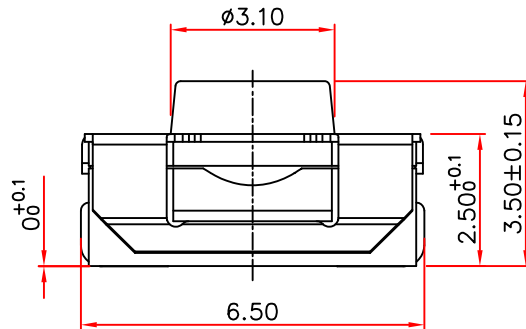
CIRCUIT DIAGRAM



RECOMMENED P.C.B MOUNTING
PATTERN DIMENSION

Specification

1. Rating : DC 12V, 50mA.
2. Travel : 0.3±0.1mm
3. Contact resistance : 100mΩ Max.
4. Insulation resistance : 100MΩ Min.
5. Operating force : 350±50gf
6. Operating life : 100,000 cycles.



5	Terminal	Brass	1	Ag Plated
4	Base	PPA	1	Black
3	Contact	Stainless steel	1	Ag Clad
2	Stem	silicone	1	Blue
1	Cover	Stainless stee	1	—
No.	Part Name	Material	Q"ty	Finishing

達立科技股份有限公司

Dawning Precision Co.,Ltd.

TEL: 886-2-82271388 FAX: 886-2-82272198

DESIGN	Jeff	SCALE		
DRAWING	Jeff	UNIT	mm	
CHECK	Jeff	SIZE	A4: 210*297	
APPROVAL	Honda	VERSION	01	

TOLERANCE UNLESS OTHERWISE STATED(mm)	
0	±0.40
0.0	±0.30
0.00	±0.20
ANGLE	±2°

PART NAME	TACT SWITCH
PART NO	TS-B58UH35-350-BL-S085
DRAWING NO	
DATE	2019/06/21